

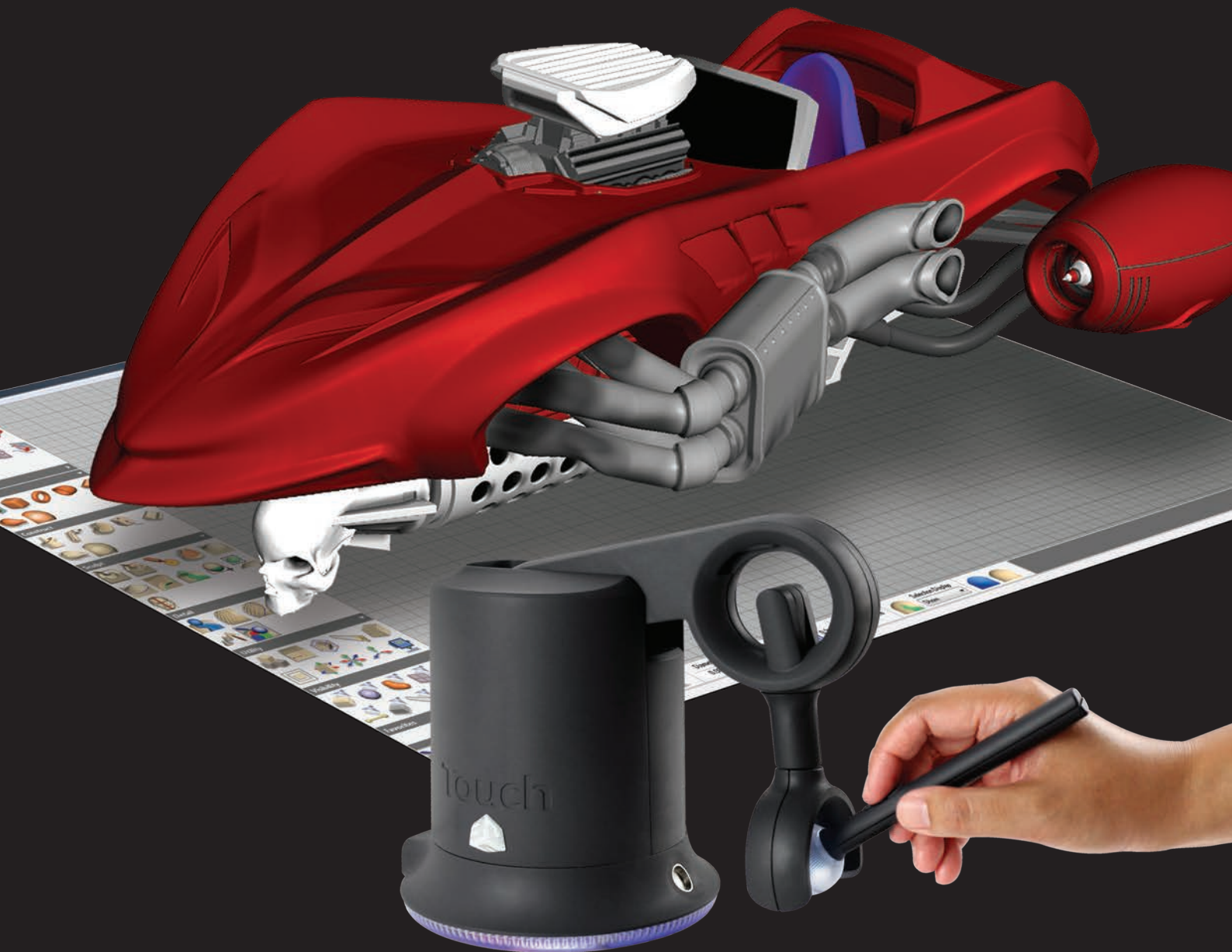


3DSYSTEMS®



Geomagic® Sculpt™

3D Design You Can Touch





Geomagic® Sculpt™

Geomagic Sculpt erases the boundaries of solid modeling, empowering you to create complex, curvy and organic shapes. What's more, with the included Touch haptic 3D stylus, you'll literally feel what you're creating on-screen. Together, it's the most intuitive way to design functional, and beautiful products.

Touch Your Design

Use 3D tools for 3D designs. Geomagic Sculpt helps you break free of the old design paradigm with an included 3D Systems Touch haptic stylus. Instead of being limited by a traditional mouse, Sculpt and Touch let you feel your design – every shape, every texture and every curve. This combination empowers you to move through 3D design with ease and confidence, especially with complex geometry.

Design the Impossible

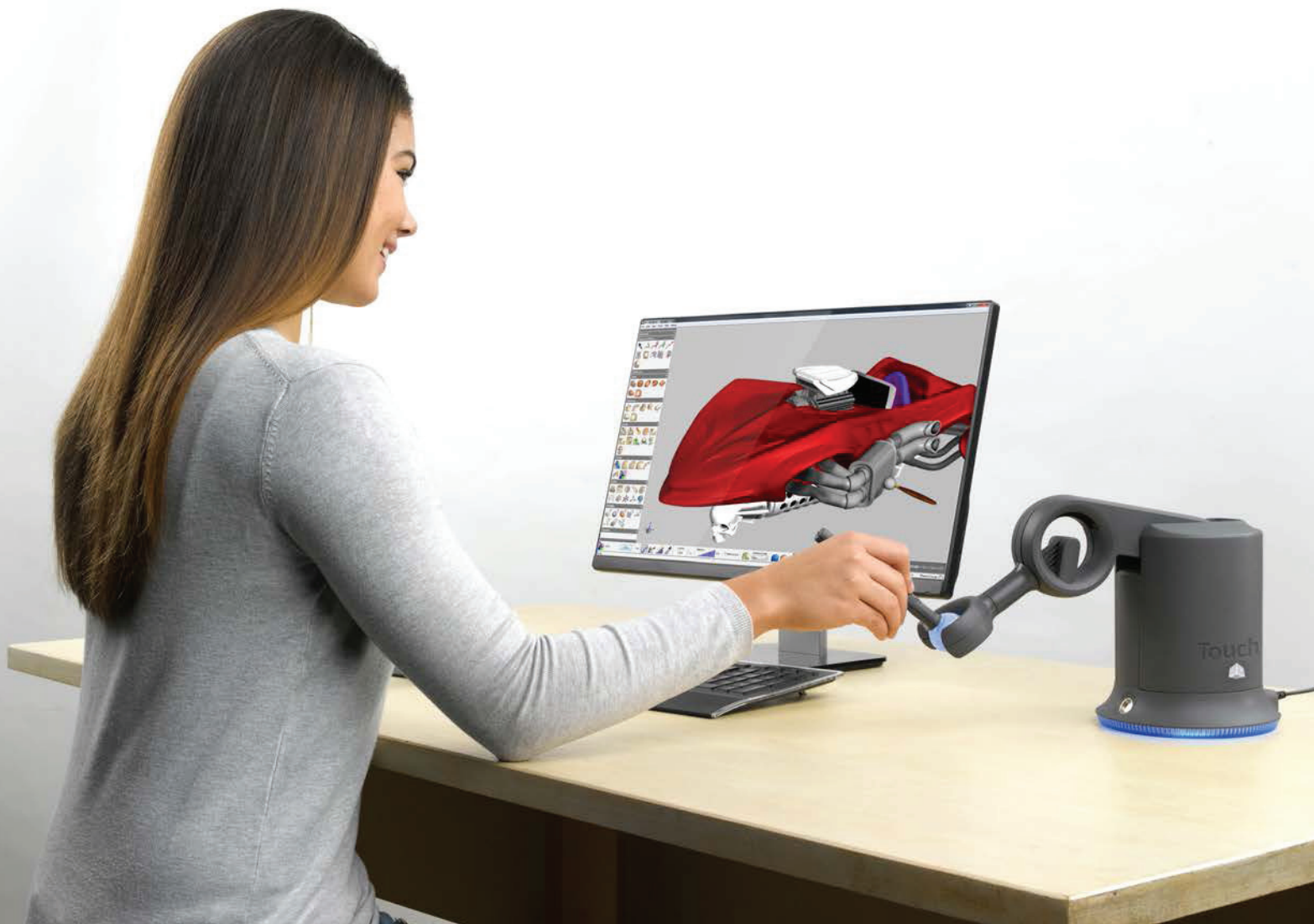
Geomagic Sculpt picks up where your CAD system stops, so you can design like never before while working within established workflows. Sculpt beautiful, detailed organic forms – designs that would normally be out of the question – because with Sculpt, you're not constrained by anything except your imagination.

3D Print-Ready

You can cut the guesswork, because Geomagic Sculpt produces 3D-printable files every time. No more wondering if your design is solid or watertight. Sculpt will even check for common printability issues, like feature size and proximity, and flag them so you can make changes before you print.

Seamlessly Beautify Your CAD Models

Geomagic Sculpt works along side your current CAD software, so you can have that elusive, beautiful industrial design in combination with CAD's functional models. Geomagic Sculpt is even fast and easy to use, both a huge step forward from notoriously complex surface modeling packages.



3D Design You Can Touch

Virtual Clay Modeling

Create exactly what you want, no limitations. With Sculpt you can harness the power of virtual clay to easily create exquisitely complex and organic forms. Tug, ridge, emboss and deform just like real clay. Sculpt is incredibly intuitive; you can even feel your design when you use the Touch™ haptic stylus.

Complements CAD

Sculpt completes your design suite by adding unconstrained geometry to your existing 3D modeling tools. Shell, texture and add complex manufacturable details in ways traditional CAD tools cannot.

Multi-representational Design Freedom

Sculpt is the only software that combines the benefits of voxel modeling and Sub Divisional (SubD) surface modeling with dimension-driven sketch tools. You can create exactly the geometry you envision, using constraints where you need to and omitting them where you don't.

Incredible Detailing Tools

Fine tune the smallest elements, and make your products stand out. Sculpt lets you bake textures of any complexity into virtual clay and perfect them for the ideal look and feel. Design flourishes, which are often impossible in CAD, are simple to do in Sculpt-just import any image and go.

Guaranteed Printability

Always be ready for 3D printing, because with Sculpt's voxel-based modeling engine, you know your design is solid. Coupled with its automatic 3D printability analysis, Sculpt lets you optimize designs on the fly for the specific 3D printer you are using.

Workflows

Sample Concept Model Workflow



Sketch your idea



Scan and import sketch, and quickly make a model using SubD surfaces



Turn your design into digital clay



Add detail to bring your design to life



Make it hollow with never-fail shelling



Your design is ready to print!



360° head scan



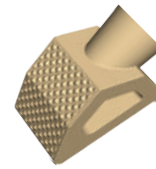
Perfected scan with added detail



Precision scan of existing design



Idealized geometry with exact dimensions



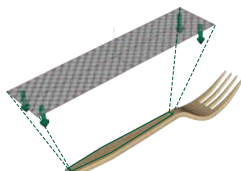
Embossed model



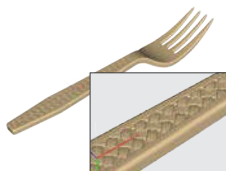
Custom football player in minutes!



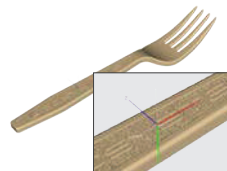
Import any geometry as a mesh



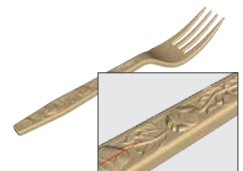
Import any bitmap image



Engrave/emboss in 3D



Add logos on top of complex texture



Add details that are impossible in CAD

Touch™ Haptic 3D Stylus

Grab Hold of Your Design

Using Geomagic Sculpt with the included Touch haptic 3D stylus supercharges your design process. It is the most intuitive, natural way possible to interact with your 3D design. Instead of a cursor moving in 2D space, you work in true 3D using a set of sculpting tools that mirror the movements of the Touch stylus in your hand.

- 6 degrees of freedom
- Force feedback, so you feel what you touch onscreen
- USB interface
- Height : 7 in (17.8 cm)
- Base diameter : 5.5 in (14 cm)



GoMeasure3D is an authorized distributor of Geomagic Sculpt.



PHONE (434) 946-9125
EMAIL sales@gomeasure3d.com
WEB www.gomeasure3d.com